

We are very pleased to welcome you to this event today.

Institute FC is hosting a public consultation event to discuss the future of lands at Clooney Park West. Clooney Park is an area of open space used for sports, primarily football and tennis, and serves a local catchment. The site sits adjacent to existing facilities on adjoining lands used by Brigade Cricket Club, CKU, the Orange Order and Lincoln Courts Football Club.

The proposal by Institute FC is for the development of a regionally significant shared space. Institute FC is working with stakeholders, local community organisations and the public to collect views on the proposals. At the end of the process, the consultation may lead to the submission of a planning application.

On display will be design proposals for the development of a shared space at Clooney Park West that has the potential to have a transformative effect locally.

The development comprises a 3200-capacity football stadium, a new 3G or 4G pitch, four spectator stands, bar/restaurant, conference and community facilities, ancillary office floorspace, player training and welfare facilities, media and broadcast facilities, floodlighting, and electronic display installations. Proposals will also deliver vehicular and pedestrian access, coach and car parking, and landscaping.

This event will show you:

- The site and location
- The proposals
- The proposed timeline

Your views:

This consultation is an important part of a process of consultation and collaboration with community organisations and direct surveys of the public that has been ongoing over the past three years and has helped to shape the draft proposals.

We welcome your feedback on the proposals. Please submit any comments directly to us or by email to:

mark@mciplanning.com

The information boards can also be found online at:

<https://mciplanning.com/>

Thank you for attending.



PROPOSED SITE WITHIN THE WIDER CONTEXT

PROJECT TEAM

Document prepared by Gravity Architects in partnership with KH Chartered engineers & MCI Planning And Development on behalf of Institute Fc.



The proposed stadium for Institute Football Club at Clooney Park West, aims to enhance the sporting and community infrastructure in the region. The development seeks to provide Institute FC with a modern and purpose-built venue that fosters a sense of community engagement and supports the growth of football in the Waterside area.

The stadium design features facilities such as:

Playing Field: A synthetic surface playing field meeting international standards to ensure optimal playing conditions.

Seating and Spectator Areas: A mix of standing and seating for spectators, with a maximum of 3,200 spectators to be accommodated.

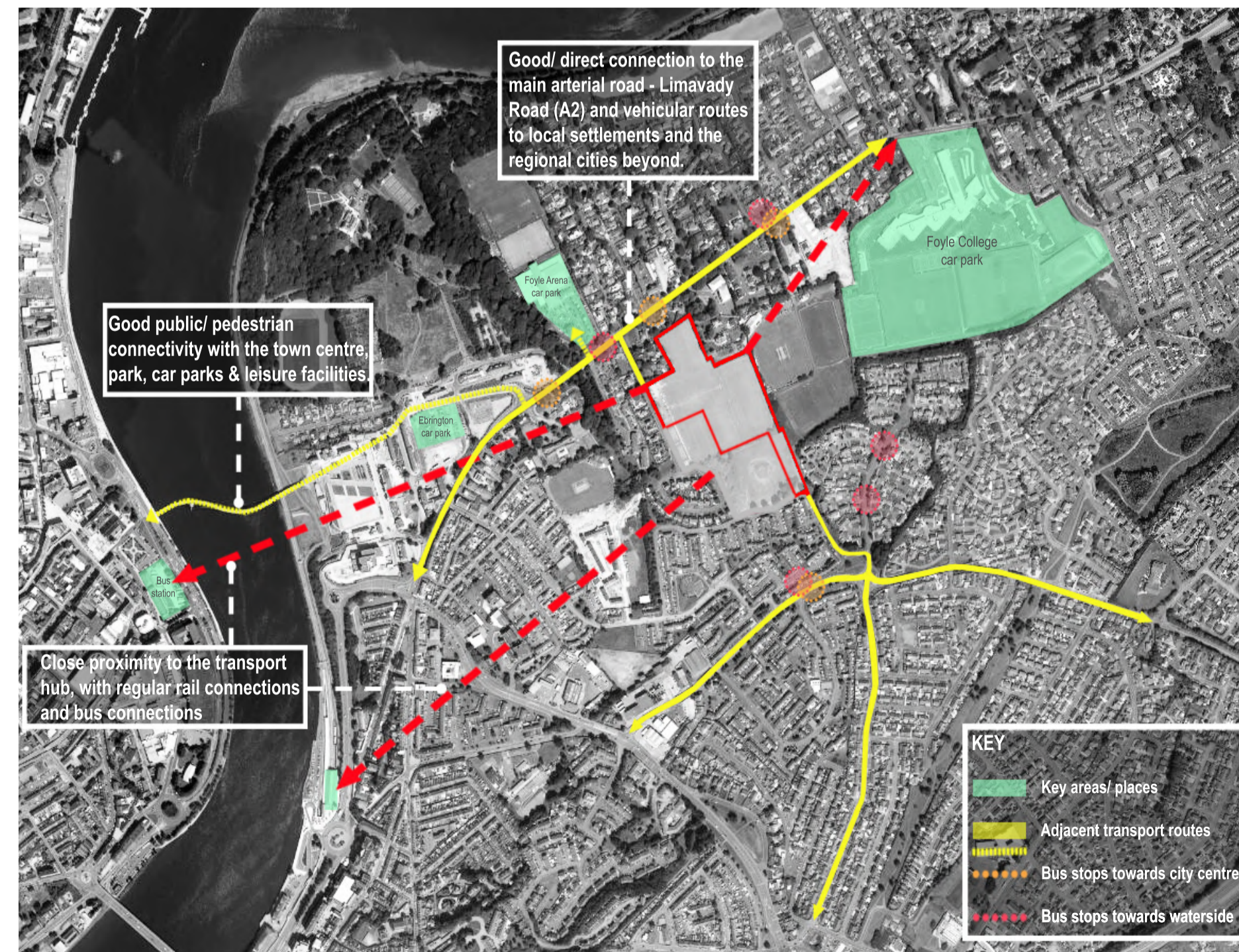
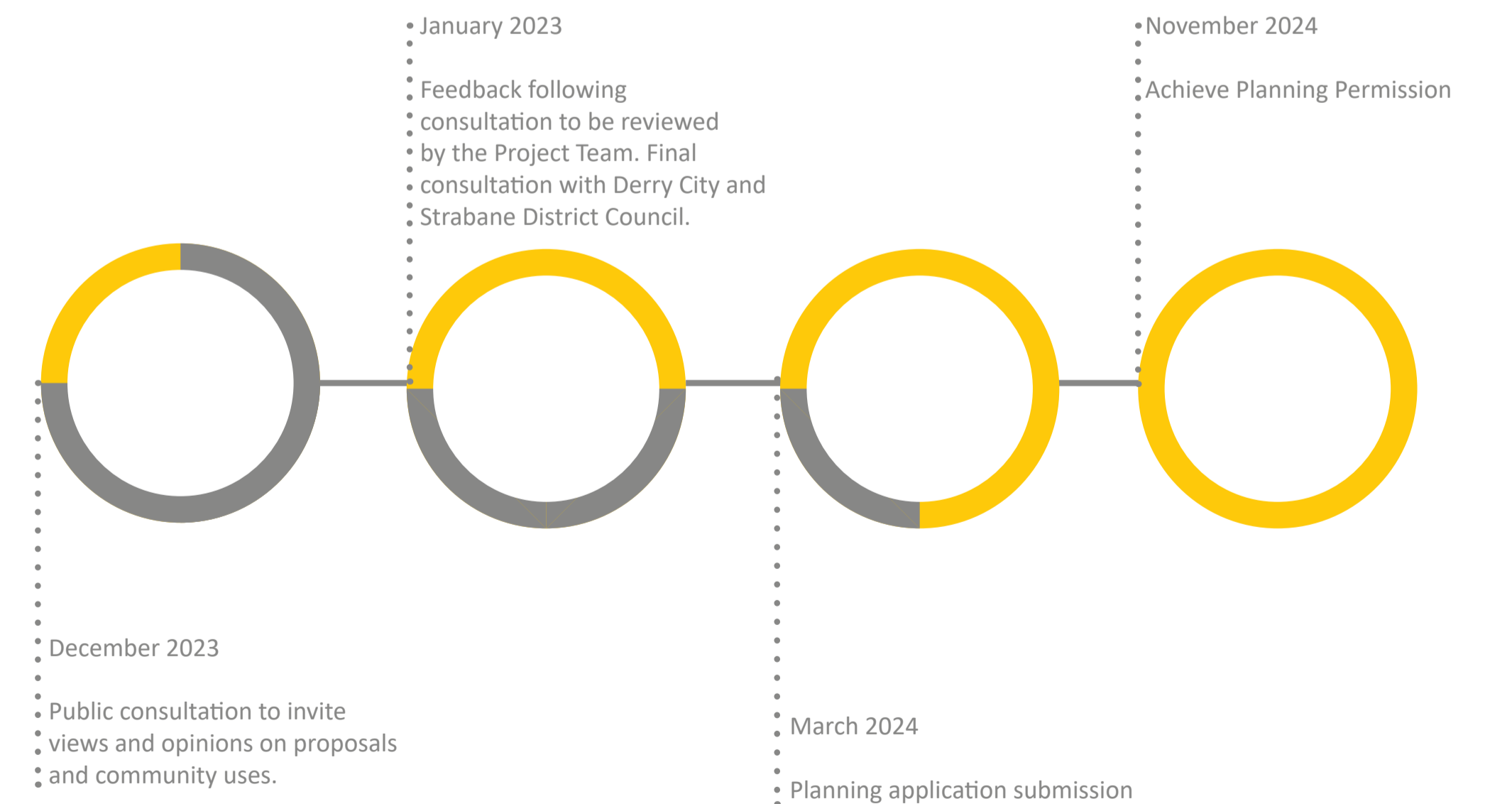
Clubhouse and Hospitality Suites: A modern 'clubhouse' equipped with facilities for players, coaches, and administrative staff. Hospitality suites cater to sponsors and VIP guests, enhancing the overall matchday experience.

Player Changing and Welfare Facilities: Facilities to support the ongoing development of players at all levels.

Community Spaces: Inclusion of community spaces within the stadium premises, encouraging local participation in sports and related events.

Timeline:

The indicative timeline below outlines the anticipated goal of achieving planning permission by November 2024.



WIDER NETWORK OF TRANSPORT & CONNECTIONS TO THE SITE



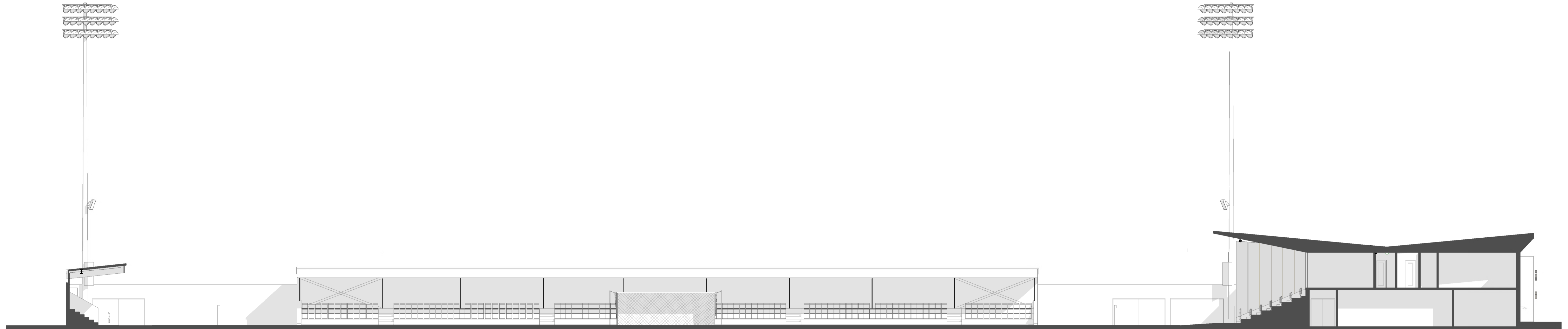
DENSE LANDSCAPING SURROUNDING SITE



- PROPOSED IFC BOUNDARY
- 1 68X105M SPORTS PITCH
- 2 CRICKET PRACTICE NET AREA
- 3 NEW ACCESS TO BRIGADE CC
- 4 SCREENING PLANTING
- 5 PARKING
- 6 COACH / CAR PARKING
- 7 VEHICULAR ACCESS
- 8 CYCLE SHELTER
- 1.2 M HIGH SPECTATOR FENCE
- 9 STADIA SEATING / STANDING AND ASSOCIATED ACCOMMODATION
- 10 STADIA TURNSTILES / ANCILLARY ACCOMODATION
- 11 MAIN STAND

PROPOSED SITE LAYOUT





PROPOSED SITE SECTION A-A



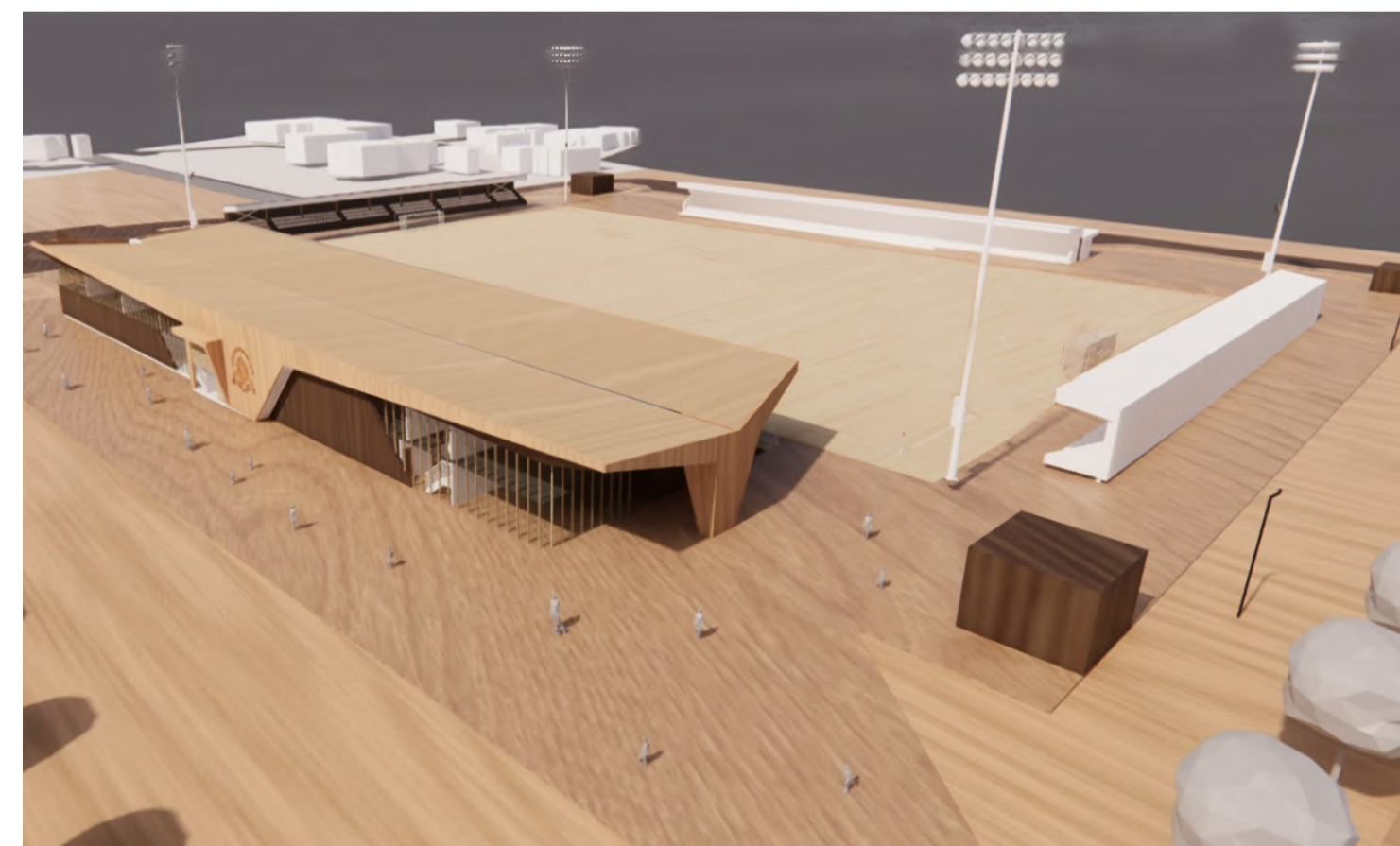
PROPOSED SITE SECTION B-B



ILLUSTRATIVE MASSING VIEW FROM MAIN STAND TOWARDS PITCH



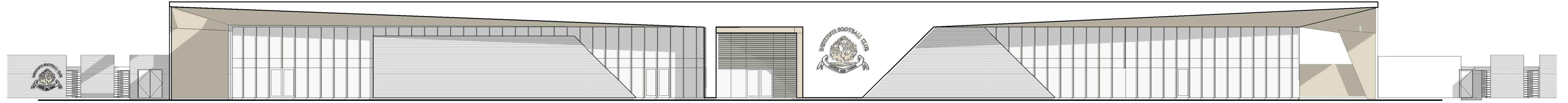
ILLUSTRATIVE MASSING VIEW OF MAIN STAND LOOKING ONTO PITCH



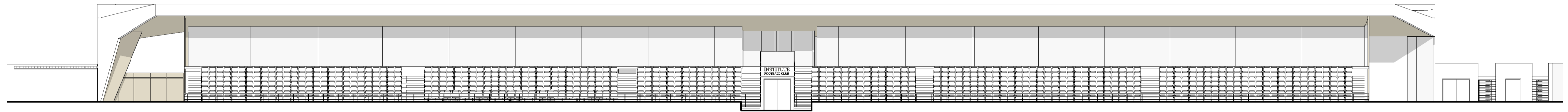
ILLUSTRATIVE MASSING VIEW OF OVERALL STADIUM



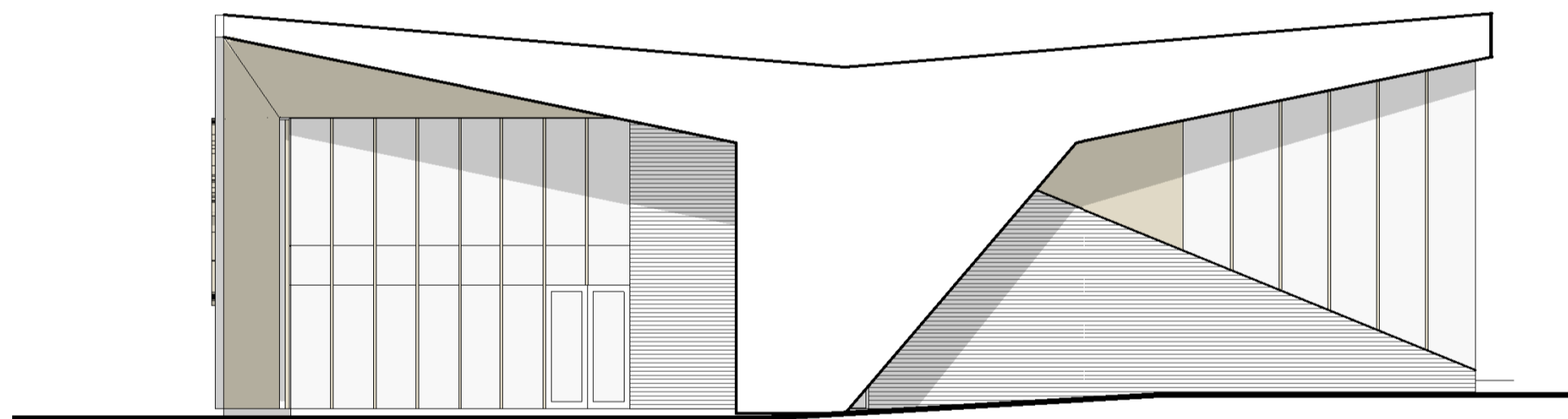
ILLUSTRATIVE MASSING VIEW OF MAIN STAND



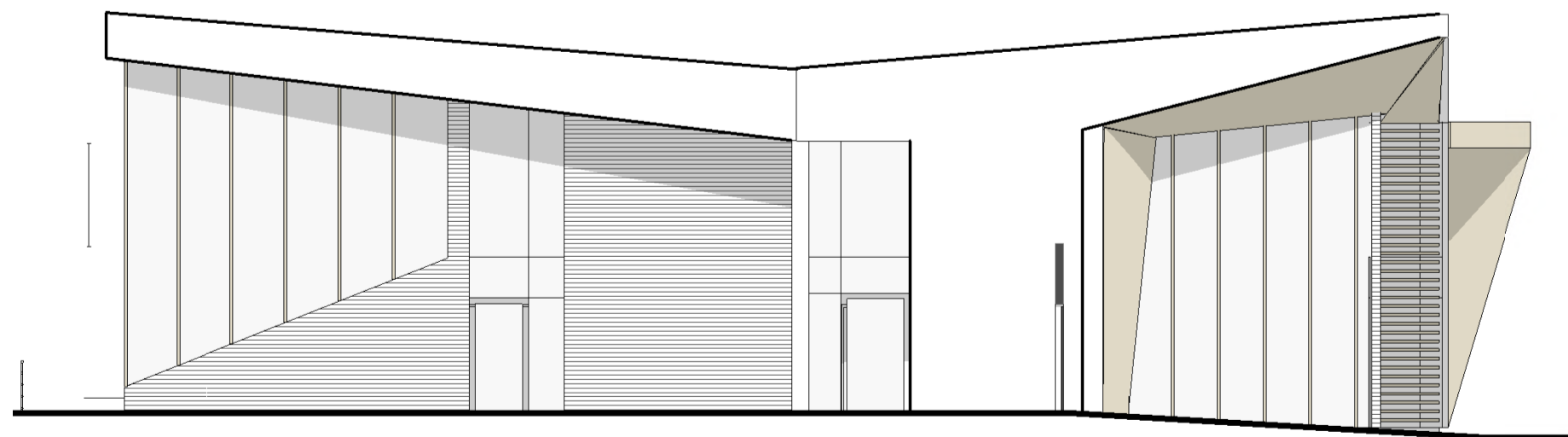
ILLUSTRATIVE FRONT ELEVATION OF MAIN STAND TOWARDS CLOONEY PARK WEST



ILLUSTRATIVE REAR ELEVATION OF MAIN STAND



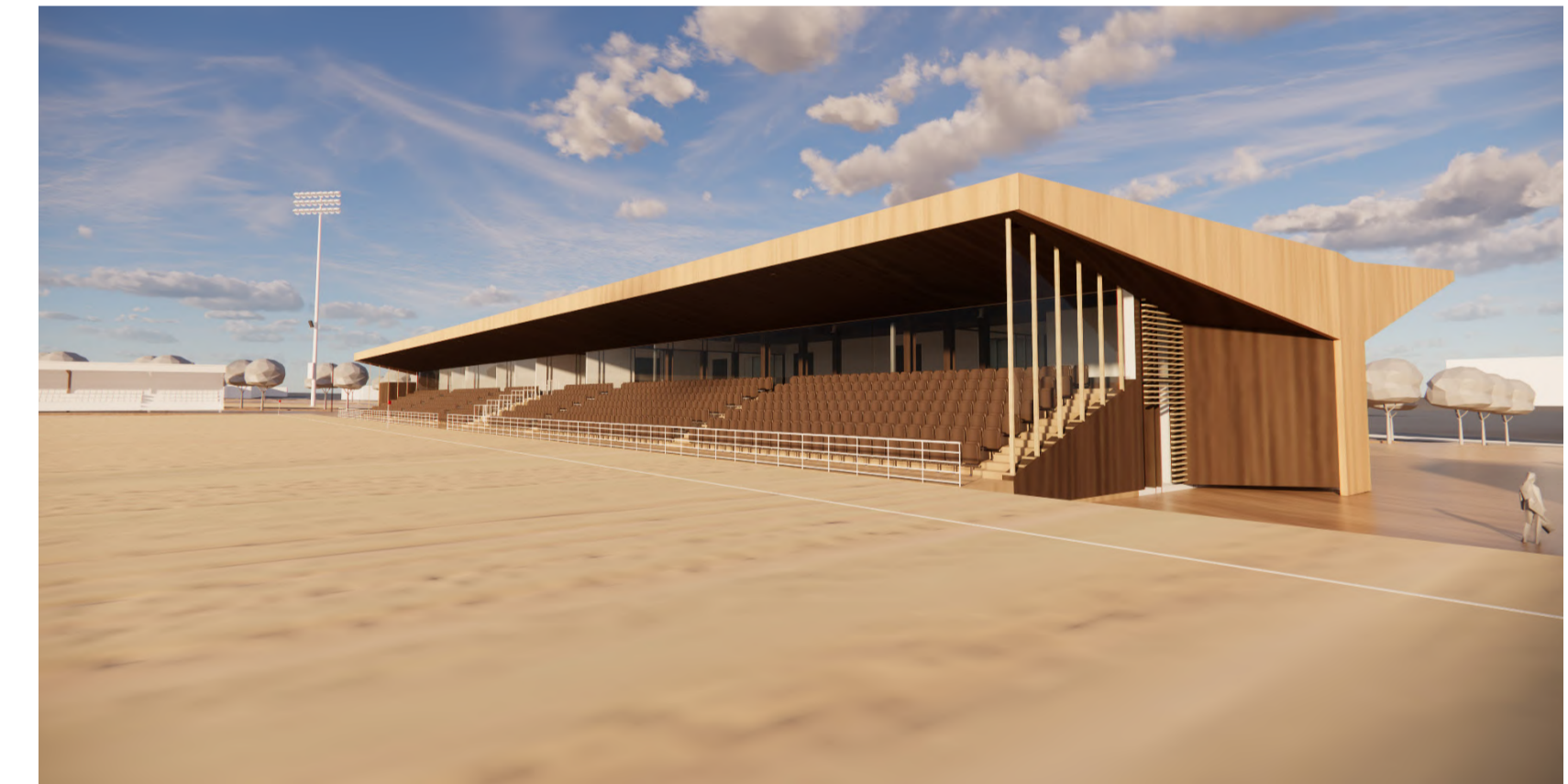
ILLUSTRATIVE SIDE ELEVATION OF MAIN STAND TOWARDS HERON WAY



ILLUSTRATIVE SIDE ELEVATION OF MAIN STAND TOWARDS LIMAVADY ROAD



ILLUSTRATIVE MASSING VIEW OF MAIN STAND FROM CLOONEY PARK WEST APPROACH



ILLUSTRATIVE MASSING VIEWS OF MAIN STAND FROM PITCH



ILLUSTRATIVE MASSING VIEW OF ENTRANCE TO MAIN STAND



ILLUSTRATIVE MASSING VIEW OF SPECTATOR ENTRANCE FROM CLOONEY PARK WEST